

**In this presentation I take
the negative position on
the statement:
“A plane was destroyed
at the Pentagon.”**

Craig McKee

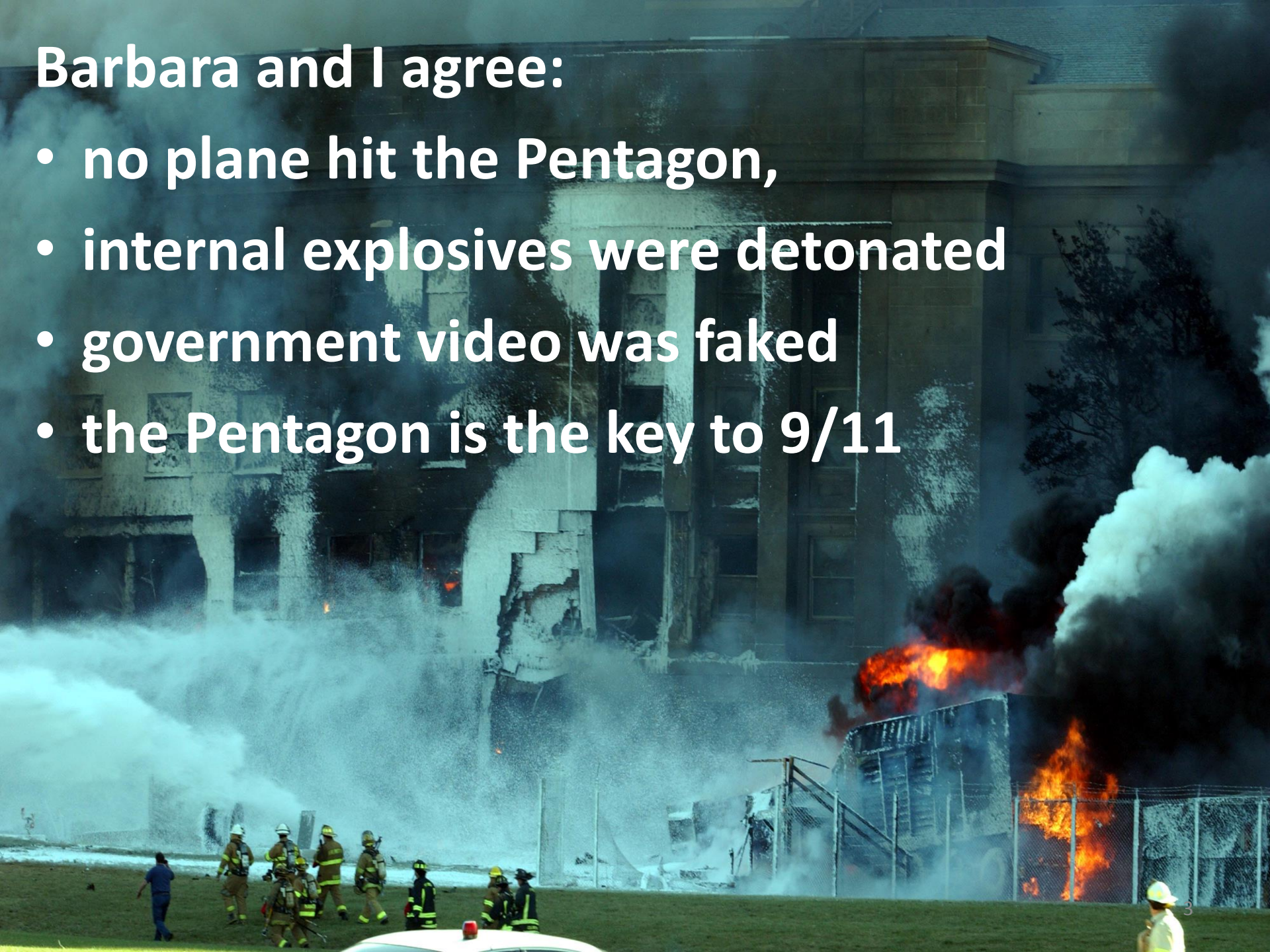
**9/11 and Other Deep State Crimes
Teleconference, January 18, 2017**

**This is the scene of a
simulated plane crash, not
a real plane destruction.**




Barbara and I agree:

- no plane hit the Pentagon,
- internal explosives were detonated
- government video was faked
- the Pentagon is the key to 9/11



We also agree about the credibility and the value of the north of Citgo witnesses interviewed by Citizen Investigation Team and that an approach from the north path means that the light pole evidence **had to have been staged.**



An aerial photograph of the Pentagon and surrounding area. A blue line curves from the bottom left towards the top center, labeled 'north side flight path'. A red line curves from the top center towards the bottom right, labeled 'official south side flight path'. Several yellow vertical markers are placed along the red line, labeled 'downed light poles'. In the foreground, there is a large green field with a road curving through it. At the bottom, there is a building with a sign that says 'CITGO'. In the bottom right corner, there is a red timestamp '11 1:07 PM'. The Pentagon building is visible in the background, with smoke rising from it.

north side flight path

downed light poles

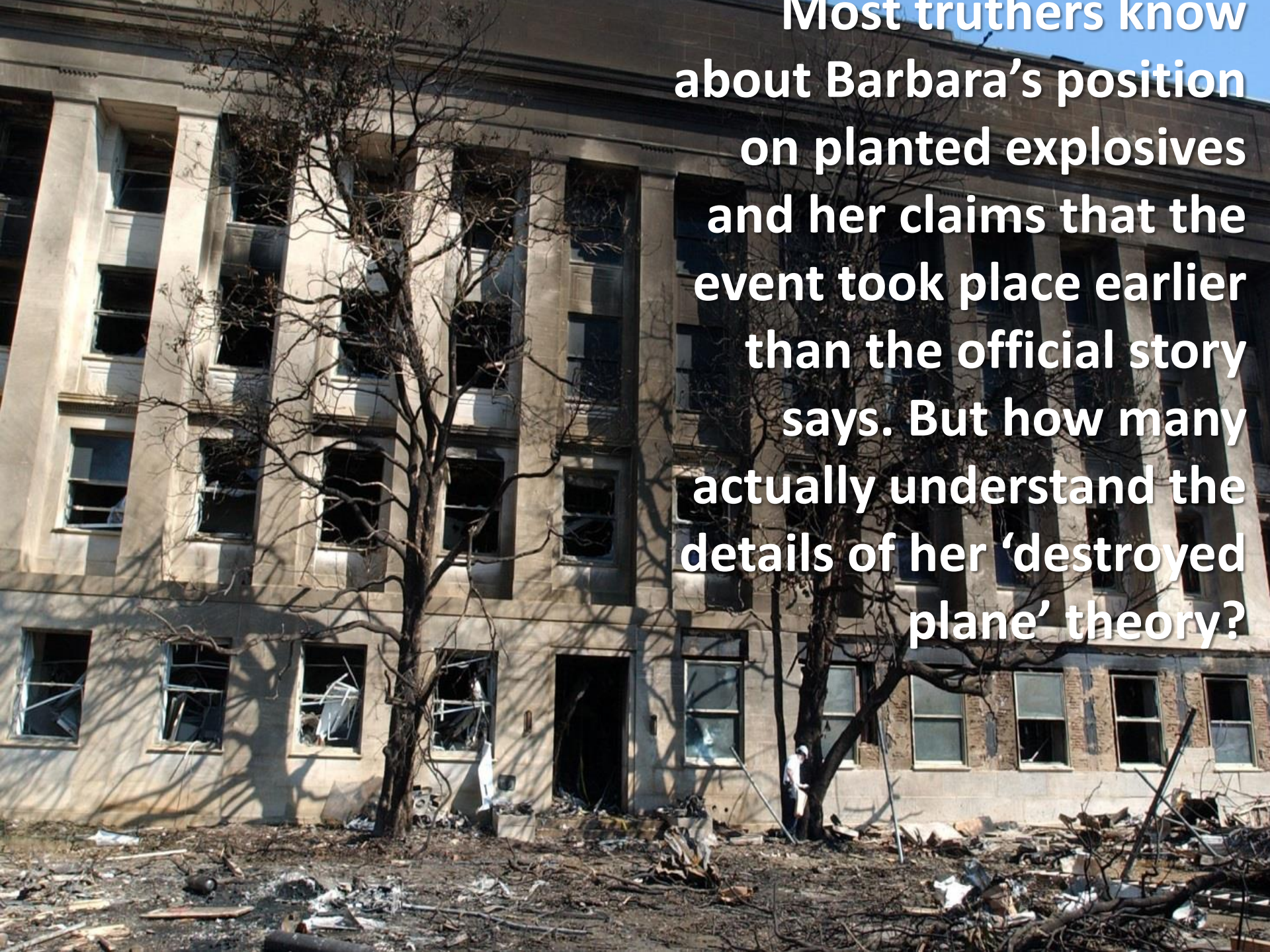
official south side flight path

CITGO

11

1:07 PM

**Most truthers know
about Barbara's position
on planted explosives
and her claims that the
event took place earlier
than the official story
says. But how many
actually understand the
details of her 'destroyed
plane' theory?**



Despite the respect many in the Truth Movement have for Barbara and her research, her theory has not become widely accepted. Or even moderately accepted.

**This is because it
simply isn't supported
by the evidence, as I
will show.**

*“We can have consensus that the real story of 9/11 at both the World Trade Center and the Pentagon is, in fact, inside explosives ... The important message of my presentation is that if we want a consensus approach going forward for the 9/11 Truth Movement there is tremendous, and in some cases very toxic and personal controversy and debate over whether there was a plane and what kind of a plane and what path the plane came in on. **We don’t have to go there** in order to prove the official story completely collapses.” —Barbara Honegger, Toronto Hearings, September 2011*

But Barbara does go there.
And far beyond.

Let's look at her theory:

Barbara believes that a white fiberglass drone painted to look like an American Airlines jet flew to the north of the Citgo gas station headed for the Pentagon. She claims the plane's left wing scraped the lawn or the helipad before the craft exploded *without* reaching the building.

The timing: important or a distraction?



Barbara has made a great deal about the time of the Pentagon event as if this is the key to unlocking the truth. She says the heliport clock stopped at 9:32:30 when it was dislodged from the wall by the explosion of the white plane.

But we can't be sure that the heliport clock, or any other clock, was correctly set to begin with. We don't know if the setting of the clock's hands was changed by the explosive event. And we can't be sure that the clock hands weren't moved after the event. In other words, we can't know for sure.

The key question is not *when* the explosive event happened but whether there was **more than one** visible from the outside. Barbara's theory requires **two**: the explosion of the drone and the one that created the official 'impact' hole.

**But no one saw
two explosive
events from the
outside.**

Any major explosion outside the Pentagon would have been seen by passersby. Pentagon employees would have streamed out, particularly since they would have known about events at the World Trade Center.

If Barbara is claiming the two explosions took place at different times, then why didn't anyone come out after the first and see the second? Why did no one who was already outside see both explosions?

We know that no one reported seeing two simultaneous explosions.

**Where is
the plane
wreckage?**

Some in the movement claim a 757 impact took place and that the wings and tail section burst into confetti when they hit the wall at the official alleged impact point with the wreckage ending up near the heliport.

That anyone could believe that both the wings and tail can be accounted for in the scraps of material photographed on the ground is incredible. And very troubling.

Despite not believing this official impact scenario, Barbara still thinks we are looking at a plane destruction in this area.



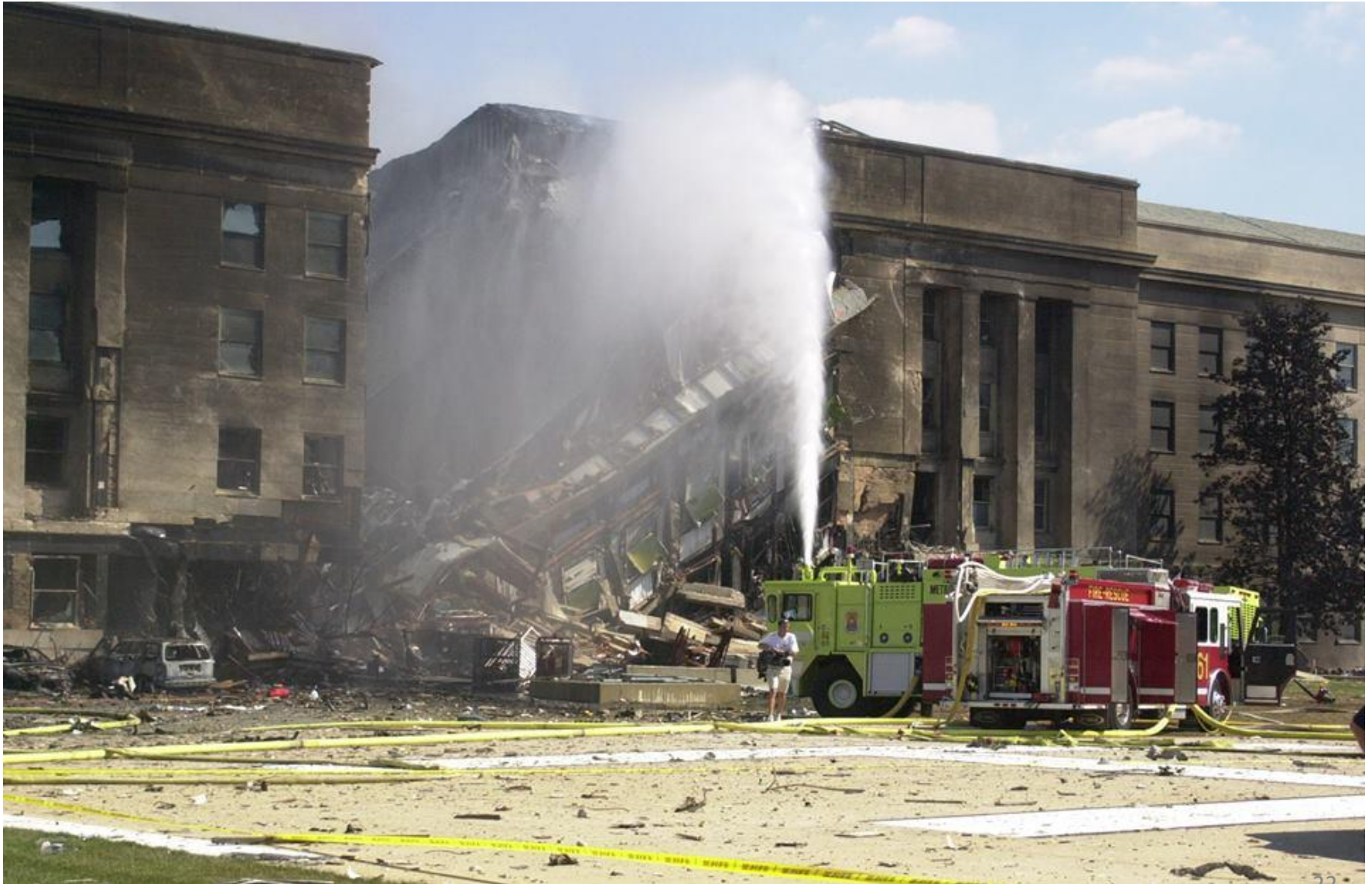
**Clearly, this is not the ‘pristine’
lawn we see in photos of the
official ‘impact’ point**



But nor does it show plane wreckage



Looking across the helipad



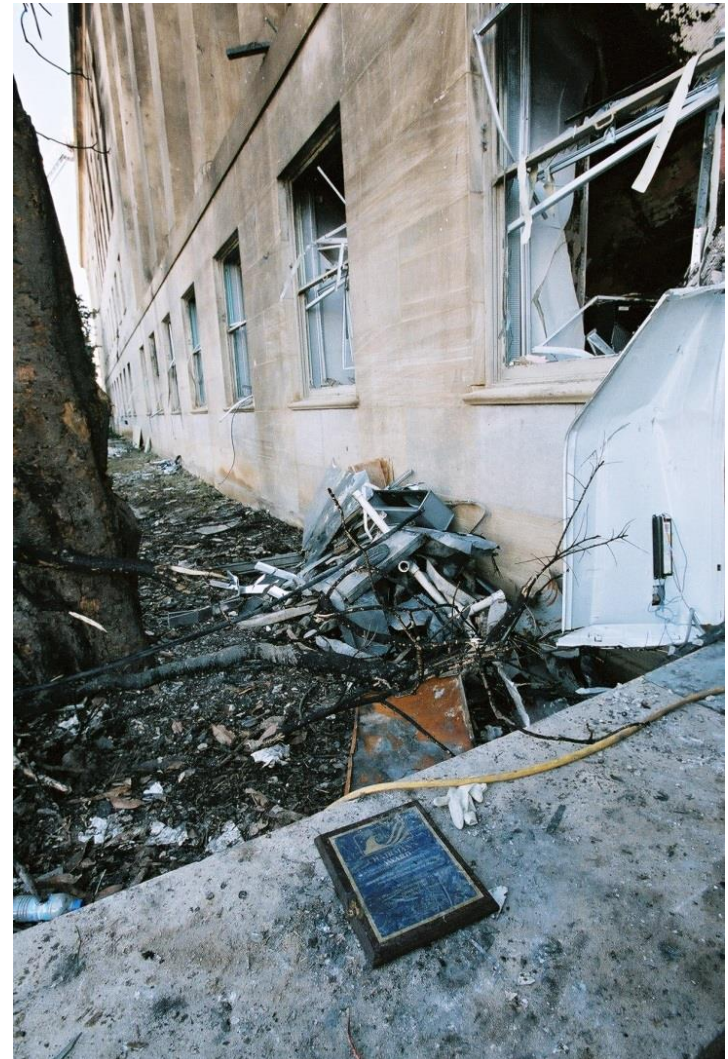
**So, where did
the debris
come from?**



2001/ 9/11 8:46am

Barbara answers this herself when she reports there was a major explosion inside Wedge 2 of the building, where the heliport is, and that this caused a **“massive pressure wave” that blew material from inside the building out on to the lawn.**

An internal explosion blew debris out from inside the building



With the helipad in the foreground, we see smoke coming from Wedge 2, more than 100 feet north of the official 'impact' point.





Why did an exploding plane in front of the fire truck only damage the back of it?

**From Bob Pugh video
—no proof of what debris is.**






**Lots of fire, but
where are the pieces
of a white plane?**

If the plane
is white
fiberglass,
what is this?



A photograph of a grassy field. In the foreground, there is a large, colorful, abstract sculpture made of many flat, triangular and rectangular pieces in shades of blue, red, white, and yellow, arranged in a somewhat circular pattern. In the background, there is a large, dark, industrial structure, possibly a bridge or a large building, with many vertical supports and a complex network of beams. The sky is overcast and grey.

And why does Barbara cite this as an example of a larger piece of the same plane wreckage? In the background we are supposed to be looking at “millions” of pieces of “confetti” that she is “99.9% sure is plane wreckage.”



The constantly changing story

Barbara has changed her position about what happened or might have happened at the Pentagon so many times that the value of her research on the subject has been seriously compromised.

**She has claimed the
'destroyed' plane was:**

A 'smaller' plane.

**A 'significantly smaller
plane than a 757.'**

A 'large' plane.

Multiple Witnesses Saw
A Large *White* low-flying plane
with stripes
approach the Pentagon and
hit/drag/scrape its Left wing
at/near the Heliport
just before bursting into a fireball.

D.C. 2013



A
"large"
plane

Multiple Witnesses Saw
A Large *White* low-flying plane
with stripes
approach the Pentagon and
hit/drag/scrape its Left wing
at/near the Heliport
just before bursting into a fireball.

Denver, 2014



She says now the drone was “significantly smaller” than a 757 but large enough that it could be mistaken for one. In the final slide of her debate with Wayne Coste in Dec. 2015 she indicated that it was a “large plane.” By July 2016 she would not agree to argue, “A large plane was destroyed at the Pentagon” because she claimed not to believe this.

**She has said there
could have been:**

One plane.

**Two planes at different
times.**

**Two planes at the same
time.**

**One plane that came
around twice.**

**And that it (they)
approached on a:**

South of Navy Annex path.

**South path in line with
light poles (official?).**

North of Navy Annex path.

**One plane north path, one
plane south path**

Sometime between Barbara's 2013 presentation in Portland and her talk at the "9/11: Advancing the Truth" conference in Washington D.C. later the same year, she made a dramatic change to her position about the flight path taken by the "white plane" that she claims was destroyed over the Pentagon lawn.

She began claiming that the plane took a **north path** and **not a south path**, and that it was actually the same plane described by the north of Citgo witnesses. She added a correction to her Beyond the Smoke Curtain presentation in 2013 that indicated that she “meant to say” a north path. In her Second Edition, she dubbed “north” over “south” in the audio.

Claims of possible elements:

- A heat-seeking missile fired at the 'impact' point
- A smaller plane hitting at the official 'impact' point
- A white plane painted to look like AA
- A military helicopter that fired a missile at the white plane
- A plane that flew over
- A Global Hawk
- An A-3 Sky Warrior
- A military plane at the official time
- A large plane on a south path
- A large plane on a north path

More possible elements:

- A smaller plane on a north path
- Two planes approaching simultaneously
- Two planes approaching minutes apart
- A second plane flying through the smoke of a secondary explosion
- A drone that hit light poles on a south path and went off course
- A significantly smaller plane than a 757
- The left wing of the white plane hitting the ground just before the plane burst into a fireball
- The fireball from the white plane explosion being what we actually see in government video

**Witnesses to
a plane
destruction?**

Alan Wallace, Mark Skipper

Much of Barbara's exploding plane hypothesis is based on the accounts of two Pentagon firefighters on duty that day. Wallace and Skipper definitely describe a plane flying towards the Pentagon and they experienced a large explosion that sent them diving for cover. They did not see the explosion, however. Nor did they see any impact with the building. Wallace recounts having seen the plane for just half a second as it approached. Barbara first uses them as south path witnesses but later as north path witnesses.

Sean Boger



Pentagon air traffic controller Sean Boger was stationed in the heliport on 9/11. He confirms a north of Citgo flight path in interviews with CIT. He **did not** witness a plane exploding before reaching the wall.

How many witnesses
reported seeing a plane
explode near the heliport
without hitting the wall of
the Pentagon?

None.

North path obstacles

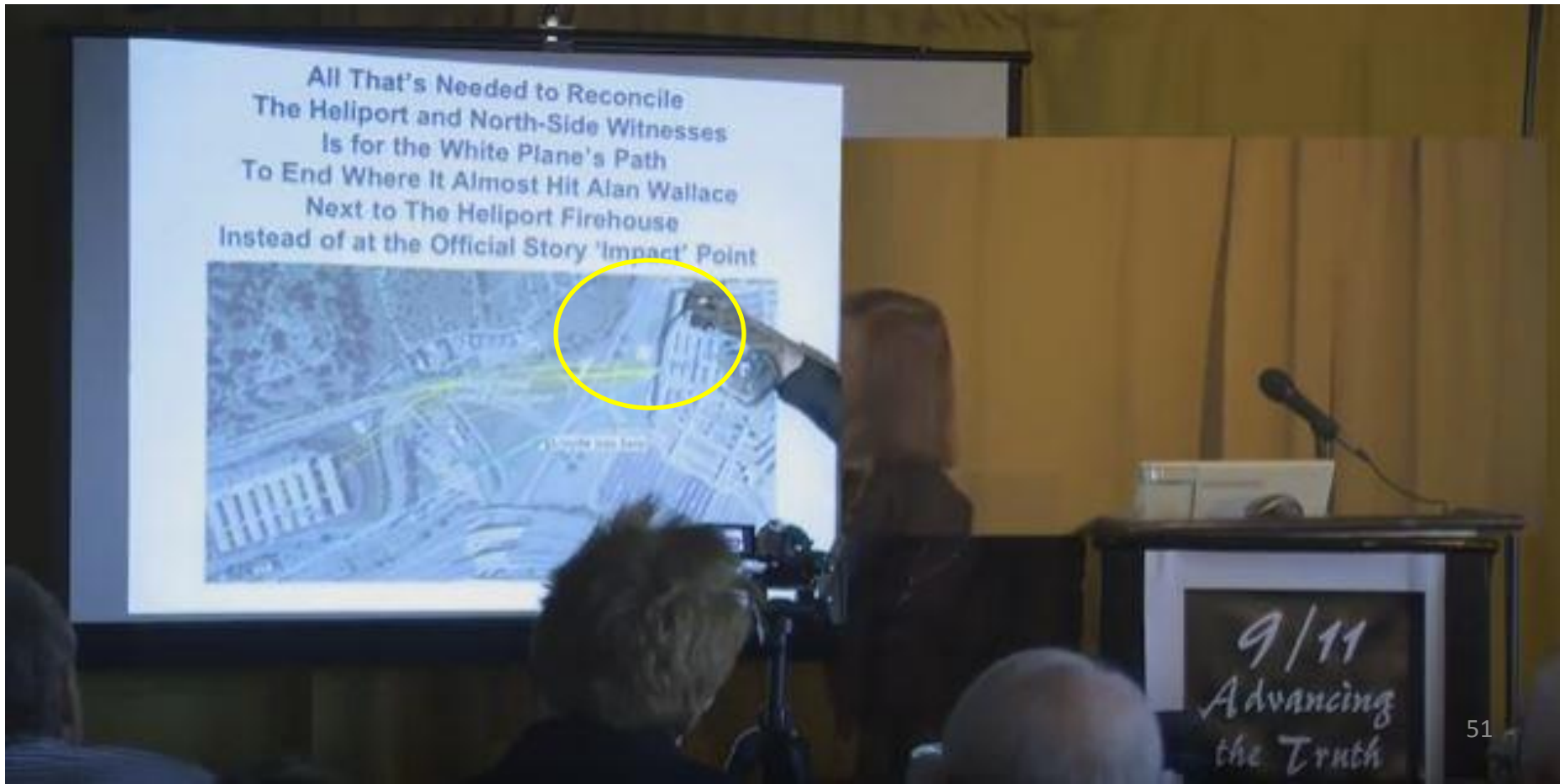
The obstacles from above



Barbara's claim of a plane blowing up over the lawn after touching its left wing to the ground **MUST BE FALSE.**

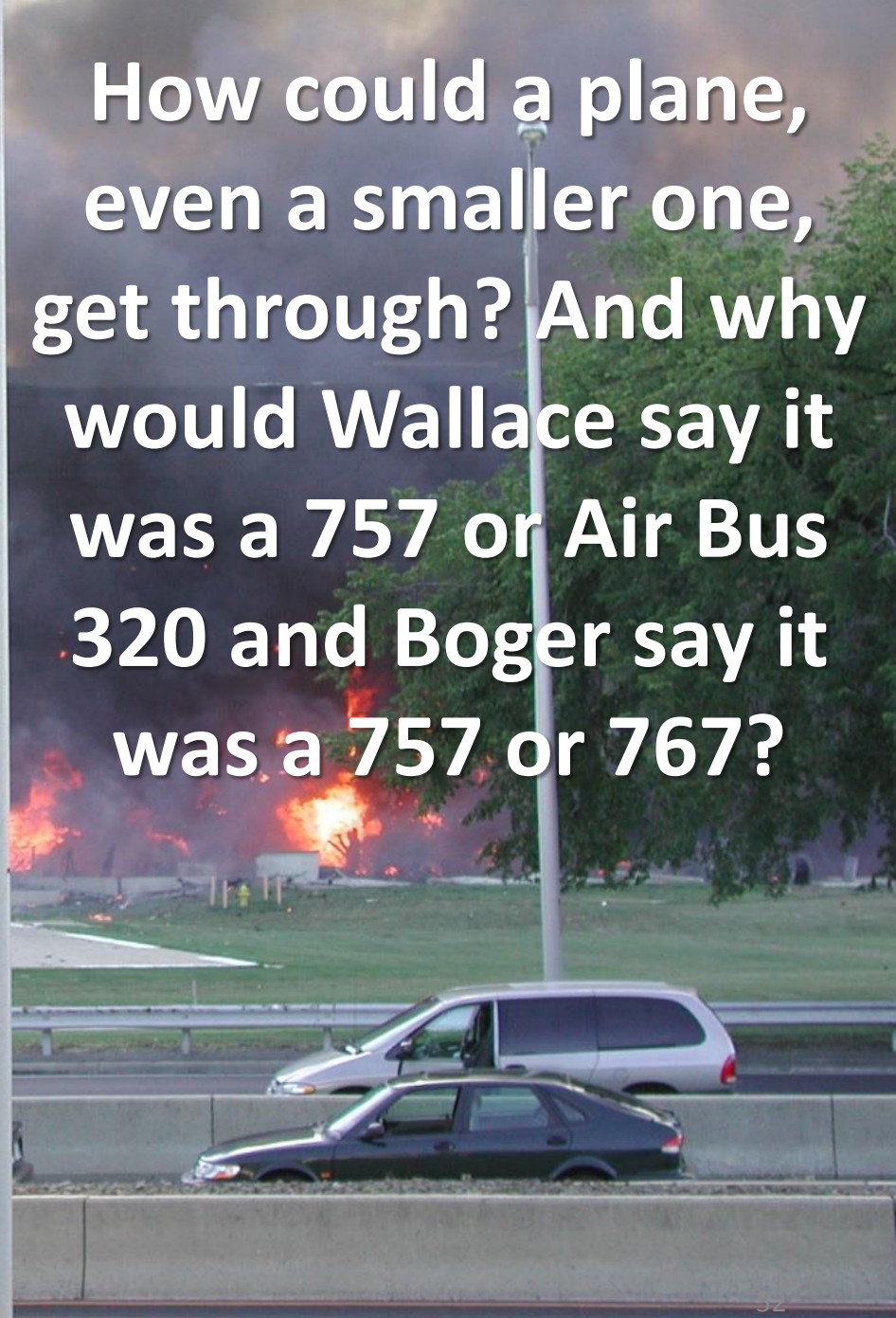
It would have been impossible for the plane to get between the trees, miss both light poles, and scrape the helipad or ground. To get through, it would have to have been **VERY SMALL** and would not have been described as a large airliner as Wallace and Boger did.

In Washington, Barbara points to the flight path with helipad and two trees visible. On the video you can see that the path she is indicating goes right between the two trees.





How could a plane,
even a smaller one,
get through? And why
would Wallace say it
was a 757 or Air Bus
320 and Boger say it
was a 757 or 767?



**This fact alone proves
that Barbara's claim
of a plane destruction
on the north path
cannot be true.**

1. There is no evidence of “millions of pieces” of plane wreckage. Just a few scraps of supposed “fuselage.”
2. There is debris that we see that appears to be a combination of office contents and tree branches. There is no evidence any of it is white fiberglass.
3. It is physically impossible for a plane to reach the Pentagon lawn on the north path without hitting light poles or trees.
4. There are no witnesses to a plane being destroyed before reaching the wall.
5. It is impossible for a plane traveling several hundred miles per hour to explode a split second before hitting the Pentagon wall without the pieces continuing into the wall.
6. There is no evidence of two major explosions that were visible from the outside. No one saw this.

**The inescapable
conclusion is that
there is simply no
evidence that any
plane was destroyed
at the Pentagon.**